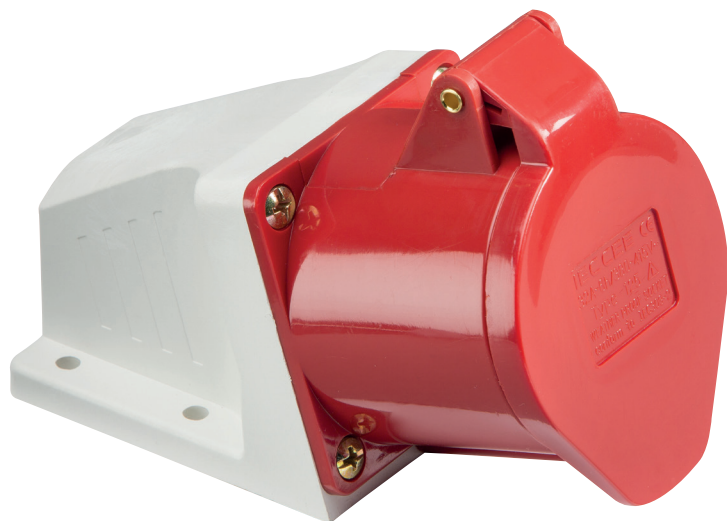


## 415V IP44 32A ANGLED PANEL MOUNT SOCKET 3P+N+E



<b>MLA part code</b>	<b>IN0020</b>
<b>Description</b>	415V Surface Mount Industrial Socket, Angled style. PG21 Style Cable Gland Fitting.
<b>Finishes</b>	Red/white
<b>Weight (kg)</b>	0.275
<b>Max Load (A)</b>	32A
<b>Overall dimensions (mm)</b>	150(l) 100(d)
<b>Cable size max (mm<sup>2</sup>)</b>	4.0
<b>IP rating</b>	IP44
<b>Input voltage</b>	415V
<b>Construction body</b>	Polycarbonate
<b>Instruction sheet</b>	No
<b>Origin of Manufacture</b>	China
<b>Warranty</b>	1 Year
<b>Quality assurance system</b>	ISO9001
<b>Declaration of Conformity (held on file)</b>	Yes
<b>Manufactured in accordance with</b>	IEC309-2

